

PNEUMATIC SOLUTIONS FOR YOUR MOBILE APPLICATIONS



DEL HYDRAULICS PRODUCT CATALOG



DEL

Toughness you can trust.™

www.del.us.com

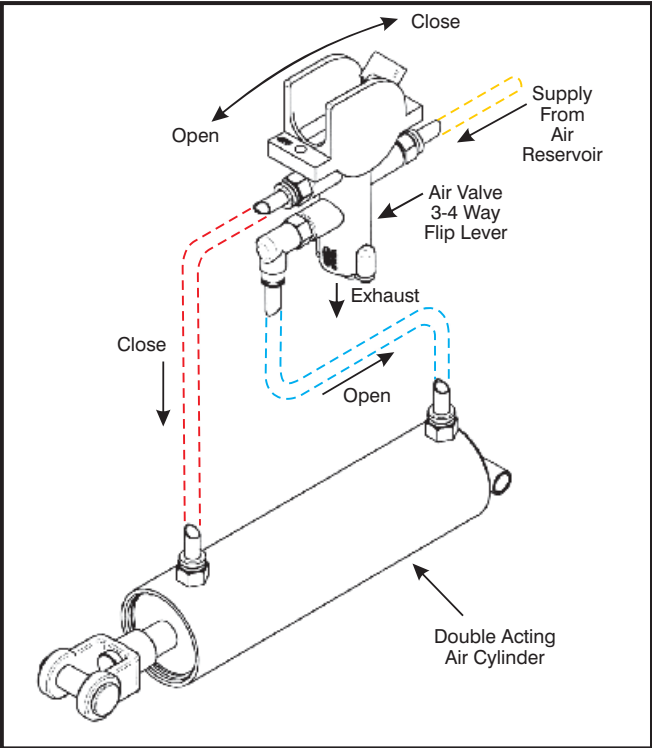


68 YEARS

DEL HYDRAULICS INC.

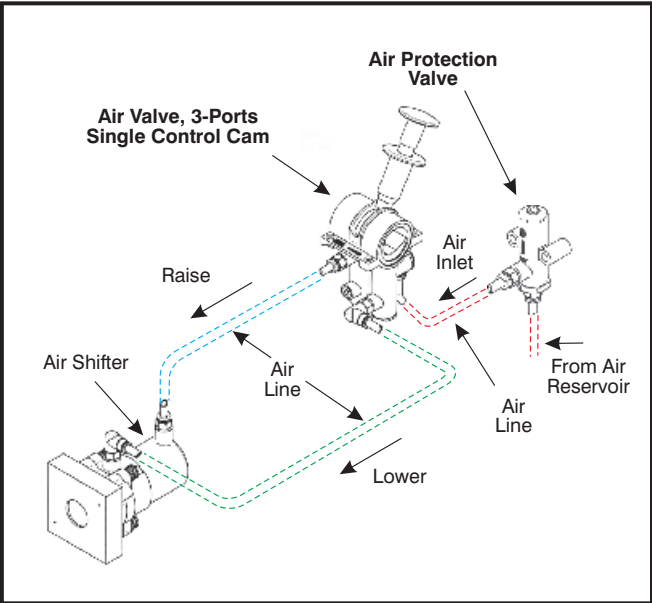
571 Howard Street, Buffalo, NY 14206 Tel 716.853.7996, Fax 716.853.8003

Valve Applications



Applications include single or double acting air cylinder control, engaging and disengaging power takeoffs, tailgate air locks, air operated doors and many more.

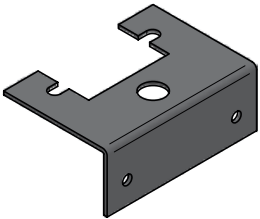
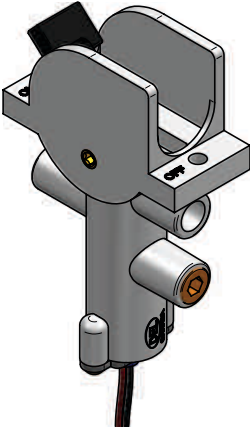
Valve Applications



In the popular application of Dump Trucks and Trailers, it will control the Raising, Holding and Lowering of hoists.

DAV-1201

2 POSITION ON-OFF, FLIP LEVER	1201-05
2 POSITION ON-OFF, FLIP LEVER C/W MICRO SWITCH	1201-06

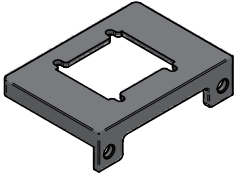
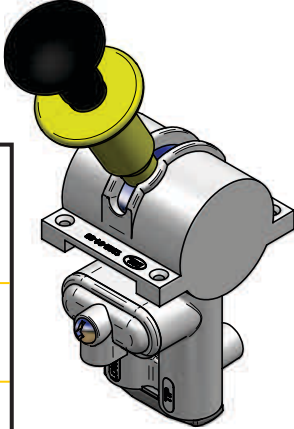


BRK-1201

BRACKET	BRK-1201
---------	----------

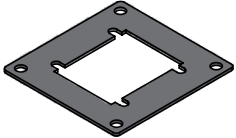
DAV-1202

SINGLE CONTROL CAM, 3 POSITION RAISE, NEUTRAL-FEATHER LOWER	1202-01
SINGLE CONTROL CAM WILLIAMS PLATE WM-787	1202-20
SINGLE CONTROL CAM SPRING RETURN FROM RAISE	1231-01
SINGLE CONTROL CAM, SPRING RETURN FROM RAISE AND LOWER	1232-01



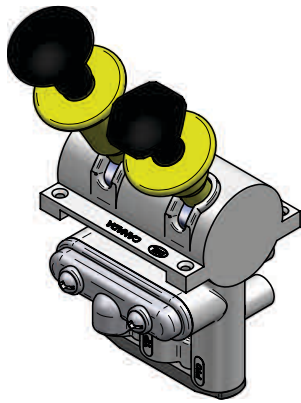
BRK-1202

BRACKET	BRK-1202
---------	----------



BRK-1202 WM

BRACKET	BRK-1202-WM
---------	-------------

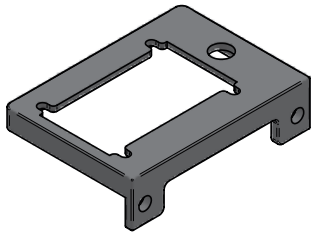


DAV-1203

DUAL VALVES

3 POSITION:
RAISE
NEUTRAL-FEATHER
LOWER
2 POSITION: ON-OFF

DUAL CONTROL CAM	1203-01
DUAL CONTROL CAM PTO DISENGAGEMENT	1203-02
DUAL CONTROL CAM SPRING RETURN FROM RAISE	1217-01
DUAL CONTROL CAM, SPRING RETURN FROM RAISE AND LOWER	1218-01
DUAL CONTROL CAM, SPRING RETURN FROM RAISE, PTO DISENGAGEMENT	1219-01

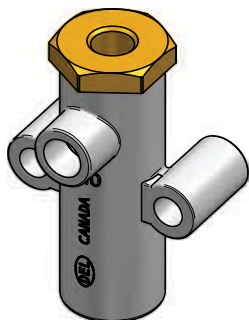


BRK-1203

BRACKET

BRK-1203

PRESSURE PROTECTION VALVES

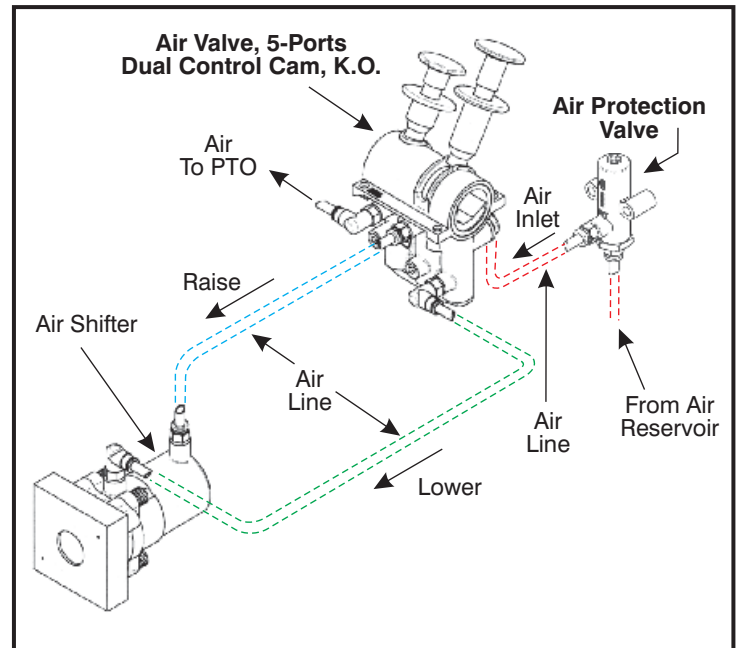


DAV-1204

ADJUSTABLE
PRESSURE PROTECTION VALVE

1204-01

Valve Applications



In the popular application of Dump Trucks and Trailers, it will control the Raising, Holding and Lowering of hoists.

PROTECT & \$SAVE
your
AIR OPERATED PTO
from being
TORN APART !



PROVIDES SIMPLE OPERATION AND EASE OF USE.

The **PTO SAVER VALVE** designed by **DEL HYDRAULICS** employs a special cartridge that automatically disengages the PTO when the spring parking brakes are released.

The DAV 1208 is ideal for **TAILGATE LATCHES** and **LIFT AXLES.**

ALL PORTS ARE SIZED 1/8" NPT
 Unscrew knob, collar and 2 set screws to install into dash or console

PROUDLY MANUFACTURED IN NORTH AMERICA

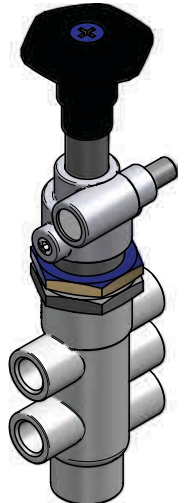
DAV-1205

2 POSITION, LOCK OUT ONLY	1205-01
2 POSITION, LOCK IN OR LOCK OUT	1240-01
2 POSITION, LOCK IN AND LOCK OUT	1241-01
AUTO KNOCK OUT/PILOT CONTROL	1245-01

(please see page 27)

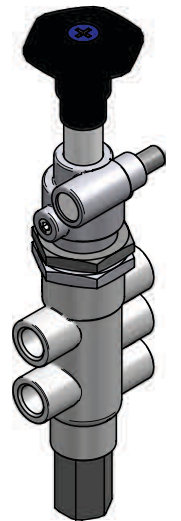
Also controls various air logic positioning functions.

Call us with your challenge!

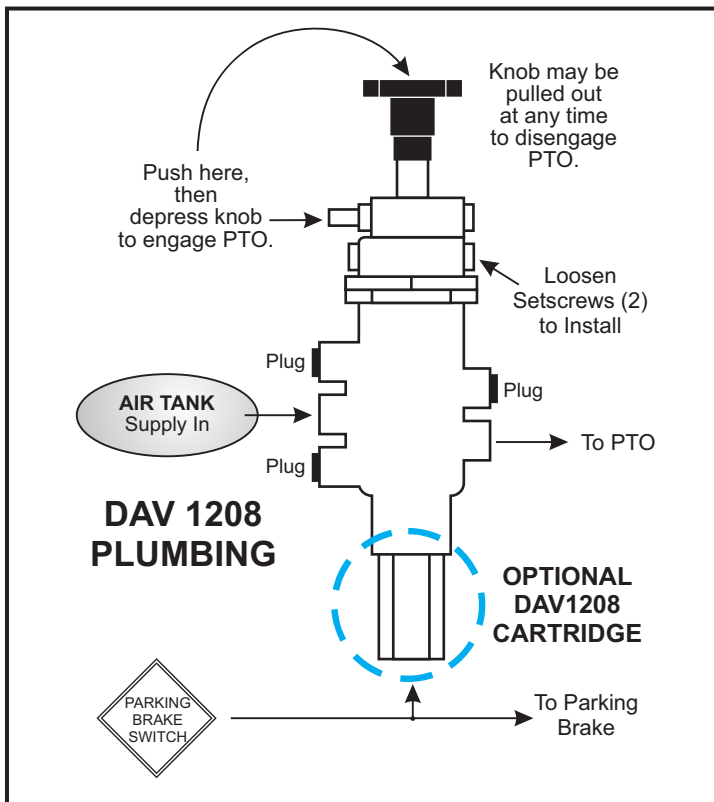


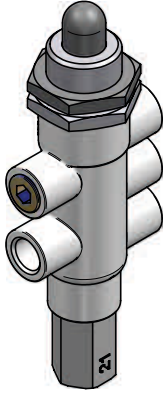
DAV-1208

2 POSITION, LOCK OUT PTO DISENGAGEMENT	1208-01
--	---------



Valve Schematic

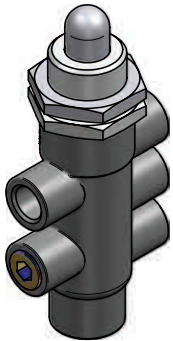




DAV-1213

KNOCK IN
LIMIT VALVE

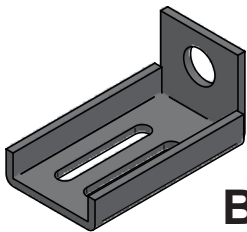
1213-01



DAV-1214

DUMP ANGLE
LIMIT VALVE

1214-01

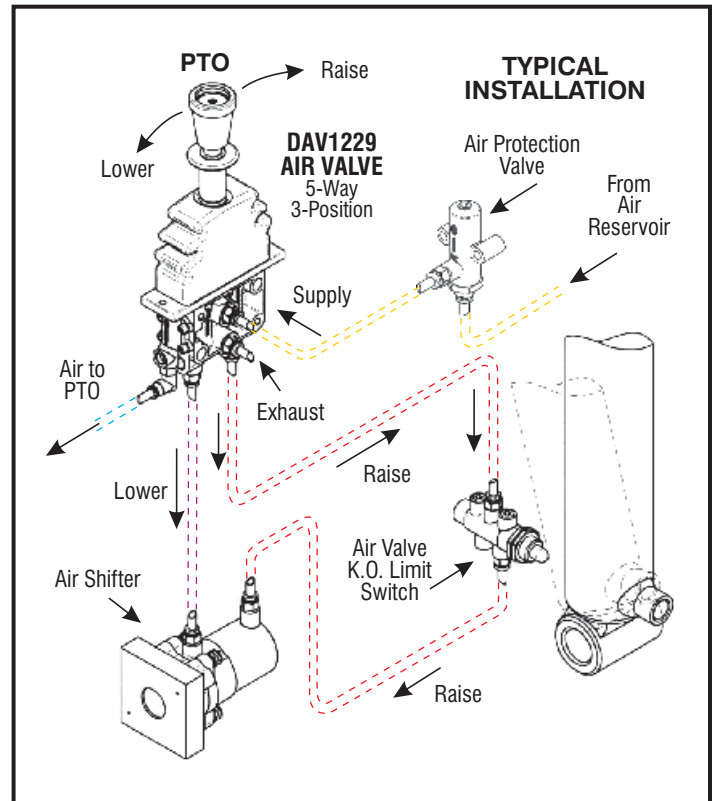


BRK-1214

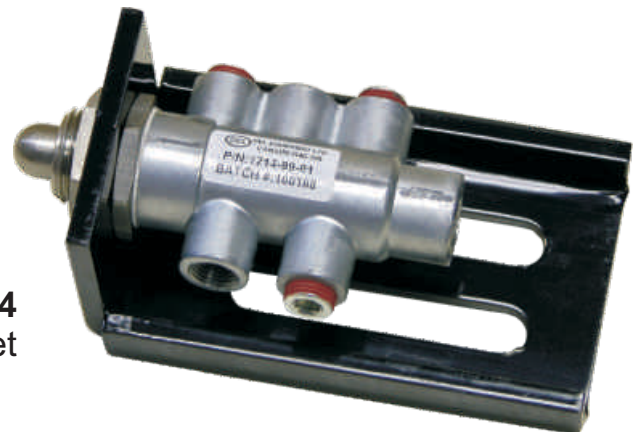
BRACKET

BRK-1214

Valve Applications



Applications include various air logic functions for positioning.



DAV 1214
with bracket

DAV1221 Valves



Stackable valves using one common and one exhaust port with one standard bolt length. Provides various bankable applications - wet line kits, dump pump controls, municipal snowplow vehicles, dump bodies, refuse vehicles and more.

Offset handles allow for a very clean installation that reduces labor costs.

0-120 PSI proportional control able to stack the valves into bankable configurations.

Various bent handles available for installation.

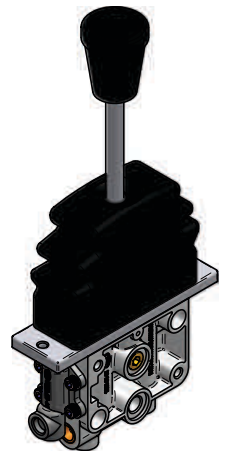
OPTIONS:

- Lit knobs for all driving conditions, even at night
- Neutral Detent
- 3-Position Detent - Raise/Lower/Neutral
- Detent Clip
- Spacer to accept various straight handle configurations
- Magnifying Cap and Decal clearly shows functions and control instructions

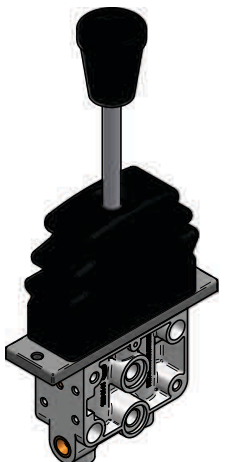
NOTE:
ALL 1220 SERIES
PNEUMATIC CONTROL
VALVES FEATHER IN
BOTH DIRECTIONS

DAV-1221

INLET MANIFOLD	1221-2-25
SPRING RETURN TO NEUTRAL	



DAV-1221

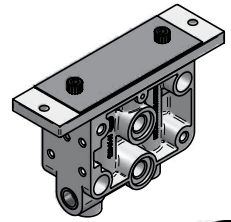


SPRING RETURN TO NEUTRAL		1221-01
SHORT HANDLE		1221-21
SPRING RETURN TO NEUTRAL	SHORT HANDLED	1221-10
SPRING RETURN TO NEUTRAL	SLIM VALVE	1221-41
SPRING RETURN TO NEUTRAL	SINGLE DETENT	1222-01
SPRING RETURN TO NEUTRAL	DOUBLE DETENT	1223-01
O-RING		1221-ORING
SCREW		1221-SCREW
RUBBER BOOT		1221-RBT

1221SPCR

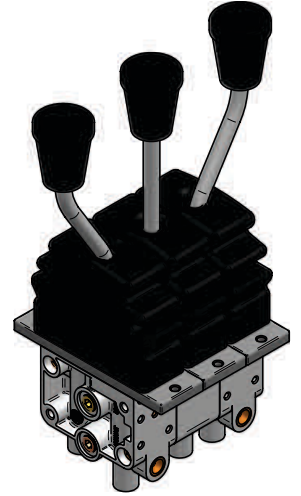
1221 SERIES BANKABLE
SPACER BLOCK

1221SPCR

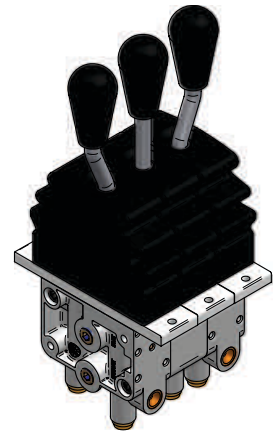


DAV-1221 BANKED

SPRING RETURN TO NEUTRAL	BANK OF TWO	1221-2B
SPRING RETURN TO NEUTRAL	BANK OF THREE	1221-3B
SPRING RETURN TO NEUTRAL	BANK OF FOUR	1221-4B
SPRING RETURN TO NEUTRAL	BANK OF FIVE	1221-5B
SPRING RETURN TO NEUTRAL	BANK OF SIX	1221-6B
SPRING RETURN TO NEUTRAL	BANK OF SEVEN	1221-7B

DAV-1221 SLIM BANKED
(WM5-21A)

SPRING RETURN TO NEUTRAL, SLIM	1221-41
SPRING RETURN TO NEUTRAL, BANK OF TWO, SLIM	1221-2B-41
SPRING RETURN TO NEUTRAL, BANK OF THREE, SLIM	1221-3B-41

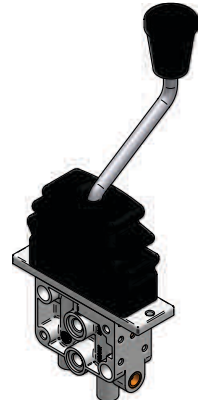


DAV-1221

SPRING RETURN TO
NEUTRAL
HALF BENT HANDLE 1221-02

DAV-1221

SPRING RETURN TO
NEUTRAL
FULL BENT HANDLE 1221-03

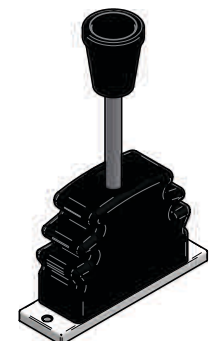


DAV-1221

SPRING RETURN TO
NEUTRAL
QUARTER BENT
HANDLE 1221-07

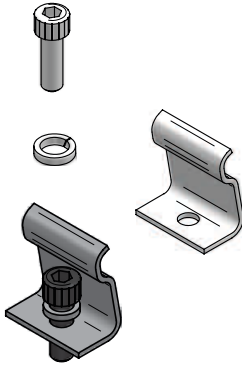
DAV-1221UH

UPPER HANDLE ASSEMBLY
FOR
1221-99-31 1221UH



SPRING DETENT

SPRING
DETENT
DETENT
CLIP



1221MNRE

MINOR
REPAIR
KIT - 1221
SERIES

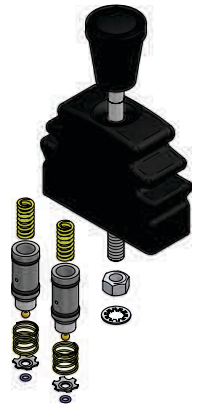
1221MNRE



1221MJRE

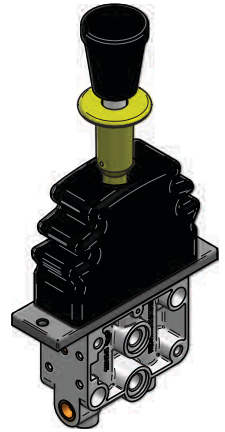
MAJOR
REPAIR
KIT - 1221
SERIES

1221MJRE



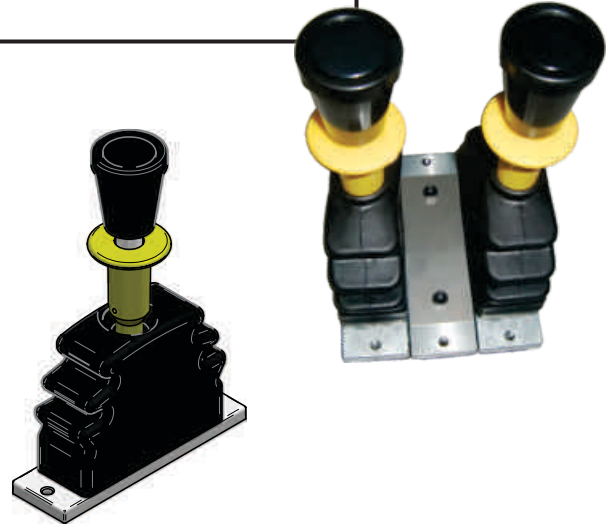
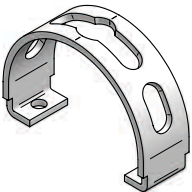
DAV-1224

SPRING RETURN TO NEUTRAL	4 WAY, NEUTRAL DETENT	1224-03
SPRING RETURN TO NEUTRAL	4 WAY, DOUBLE DETENT	1224-04
SPRING RETURN TO NEUTRAL	4 WAY, TRIPLE DETENT	1224-05
INLET MANIFOLD	AIR FITTING CARTRIDGE	1224-21
WILLIAMS PLATE	WM PLATE (787)	1224-20
DUAL	DAV1224	1224-2B



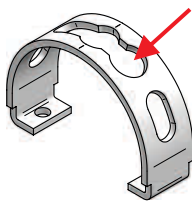
DAV-1224UH

UPPER HANDLE ASSEMBLY NEUTRAL DETENT FOR 1224-99-03	1224-03UH
UPPER HANDLE ASSEMBLY TWO DETENT FOR 1224-99-04	1224-04UH
UPPER HANDLE ASSEMBLY THREE DETENT FOR 1224-99-05	1224-05UH

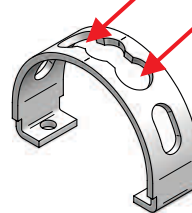
1224

TRACK NEUTRAL DETENT



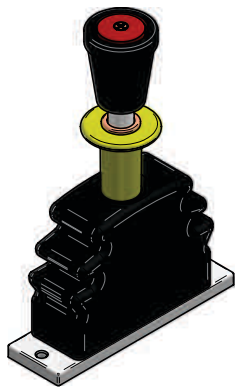
1224-ND-SD

TRACK NEUTRAL DETENT
WITH SINGLE DETENT
1224-84-22



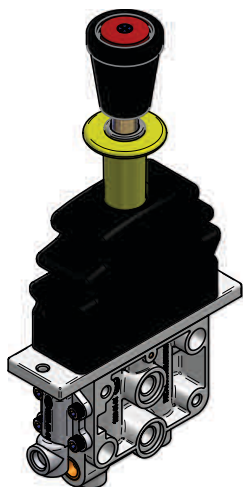
1224-ND-DD

TRACK NEUTRAL DETENT
WITH DOUBLE DETENT
1224-84-23



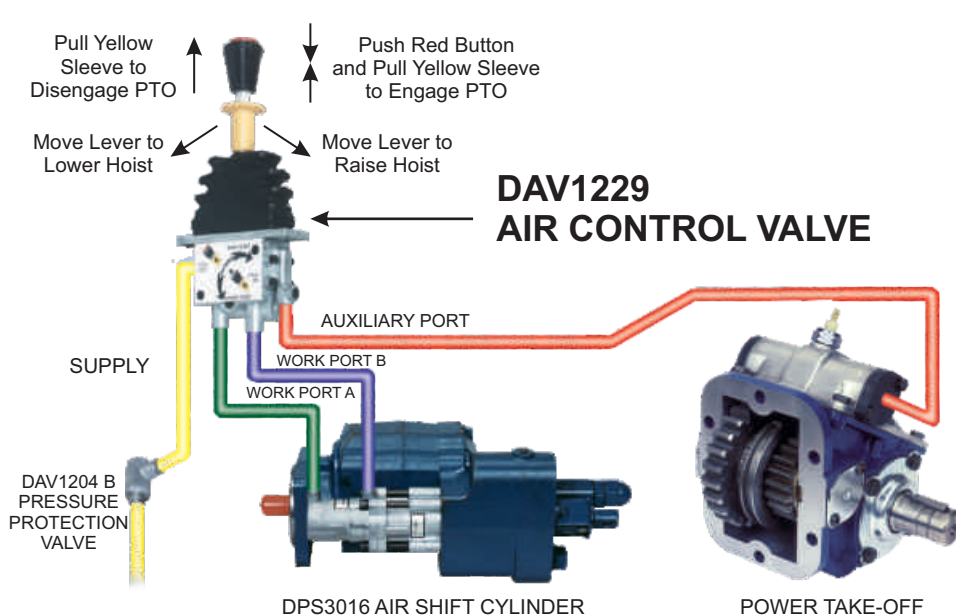
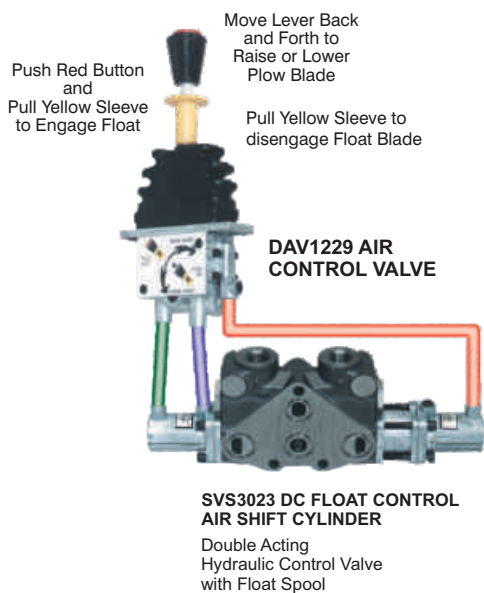
DAV-1229UH

UPPER HANDLE ASSEMBLY FOR 1229-99-01	1229-01UH
UPPER HANDLE ASSEMBLY C/W RAISED BUTTON FOR 1229-99-21	1229-21UH



DAV-1229

SPRING RETURN TO NEUTRAL PTO LOCK / RELEASE PULL SLEEVE, C/W RAISED BUTTON	1229-21
SPRING RETURN TO NEUTRAL, PTO LOCK / RELEASE PULL SLEEVE	1229-01
SPRING RETURN TO NEUTRAL PTO LOCK / RELEASE PULL SLEEVE, PTO KNOCK OUT	1229-02
SPRING RETURN TO NEUTRAL PTO LOCK / RELEASE PULL SLEEVE, DOUBLE DETENT	1229-03
SPRING RETURN TO NEUTRAL PTO LOCK / RELEASE PULL SLEEVE, SINGLE DETENT	1229-04
SPRING RETURN TO NEUTRAL, PTO LOCK / RELEASE PULL SLEEVE, PTO KNOCK OUT SINGLE DETENT	1229-05



1229MNRE

MINOR REPAIR KIT -
1229 SERIES
1229MNRE



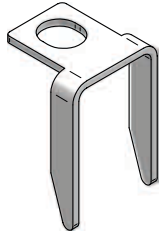
1229MJRE

MAJOR REPAIR KIT -
1229 SERIES
1229MJRE



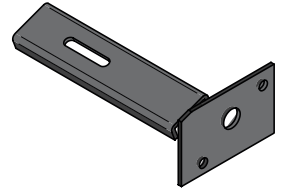
1229

ARM KNOCK OFF
1229-38-31



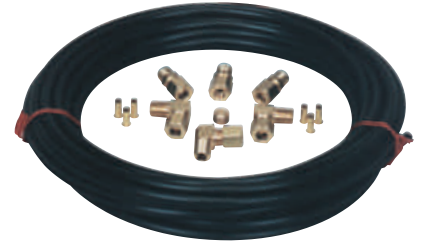
BRK-1229

BRACKET BRK-1229



FK-1229BRK

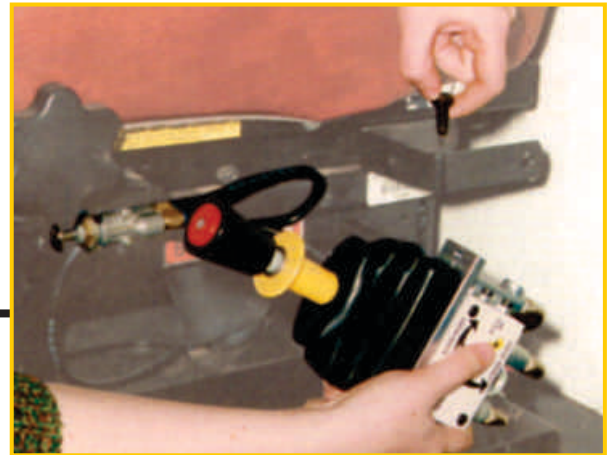
TUBING AND FITTING FK1229BRK



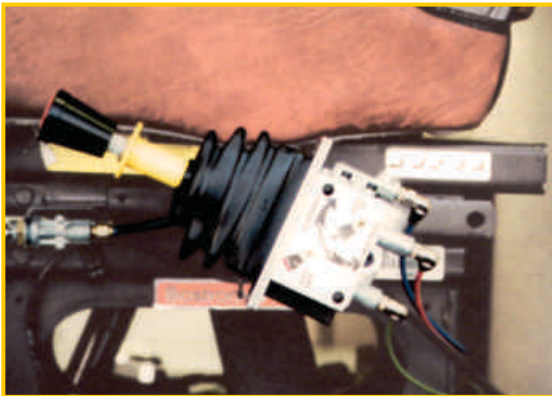
FEATHERING!

QUICK & SIMPLE INSTALLATION

Supplied air is fed through the system's pressure protection valve and a simple "T" from the air seat to the air valve.



Installing the valve onto the seat bracket.



Fully installed.

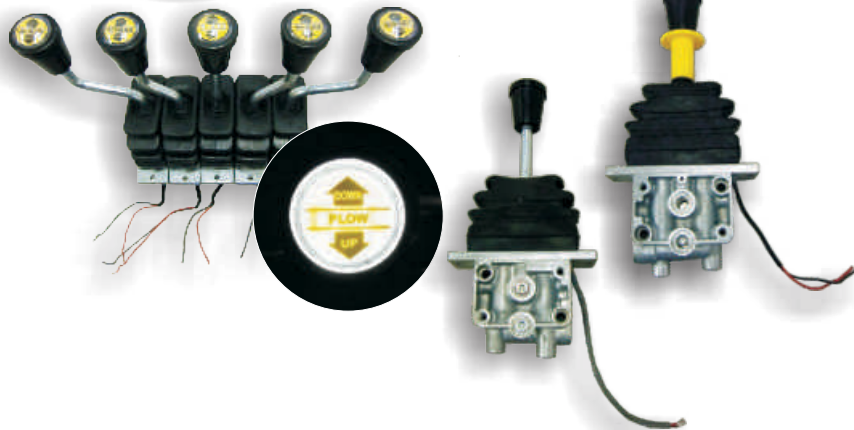


Operating the P.T.O. and Dump.

Air Controls with Back-Lit Knobs

For All Lighting Conditions

FEATHERING!

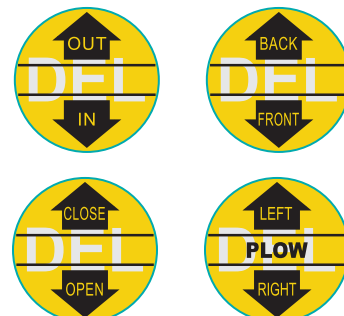
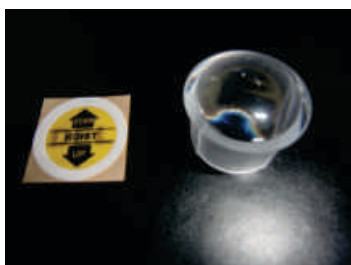
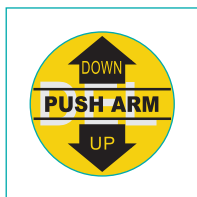


- 4 way metering bankable air valves, ergonomically designed with spring return to neutral position control remotely the metering action of pneumatic shift cylinders on various hydraulic valve spools of central hydraulic systems.
- They are available with single detent, double detent, neutral detent, as well as combined detents as options.
- Their compact size allows the valve to be multi-stacked with common inlet and exhaust manifold ports with bolts of one standard length.
- The quality illumination (minimal current draw 1.18mA at 12 volt D.C.) of the LED lighted knobs and magnifying clear caps with decals displays the functions and control instructions under all lighting conditions.

Back-lit Knob Decal Choices Available



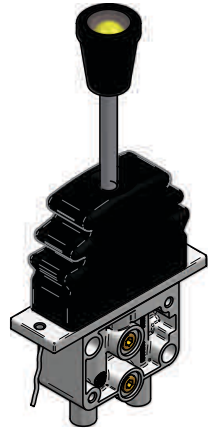
MAG CAP



AIR CONTROLS with BACK-LIT KNOBS

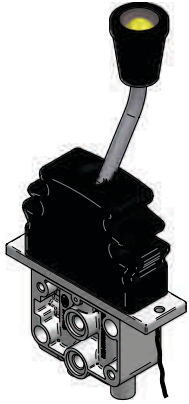
DAV-1261

SPRING RETURN TO NEUTRAL LIT KNOB	1261-01
--------------------------------------	---------



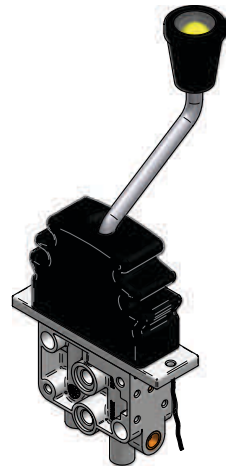
DAV-1261

SPRING RETURN TO NEUTRAL HALF BENT HANDLE LIT KNOB	1261-02
---	---------



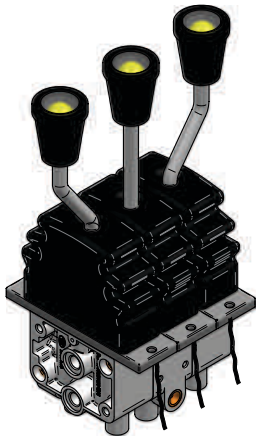
DAV-1261

SPRING RETURN TO NEUTRAL FULL BENT HANDLE LIT KNOB	1261-03
---	---------



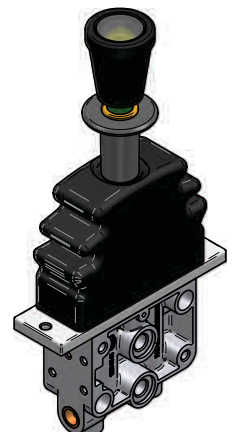
DAV-1261 BANKED

SPRING RETURN TO NEUTRAL	BANK OF TWO, LIT KNOB	1261-2B
SPRING RETURN TO NEUTRAL	BANK OF THREE, LIT KNOB	1261-3B
SPRING RETURN TO NEUTRAL	BANK OF FOUR, LIT KNOB	1261-4B
SPRING RETURN TO NEUTRAL	BANK OF FIVE, LIT KNOB	1261-5B

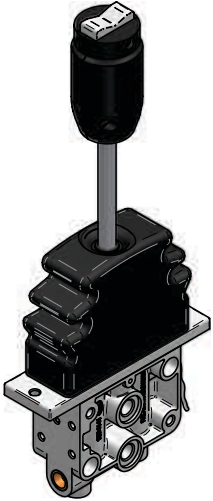


DAV-1264

SPRING RETURN TO NEUTRAL	NEUTRAL LOCK, LIT KNOB	1264-01
SPRING RETURN TO NEUTRAL	NEUTRAL LOCK, DOUBLE DETENT, LIT KNOB	1264-02
SPRING RETURN TO NEUTRAL	NEUTRAL LOCK, TRIPLE DETENT, LIT KNOB	1264-03

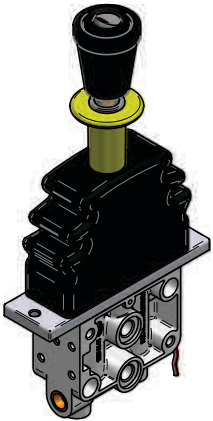


AIR CONTROLS with ELECTRONIC FUNCTIONS



DAV-1271

SPRING RETURN TO NEUTRAL	3-POSITION MOMENTARY SWITCH	1271-01
SPRING RETURN TO NEUTRAL	3-POSITION SWITCH, RTS SIDE BUTTON	1271-21
SPRING RETURN TO NEUTRAL	ON-OFF SWITCH	1271-31



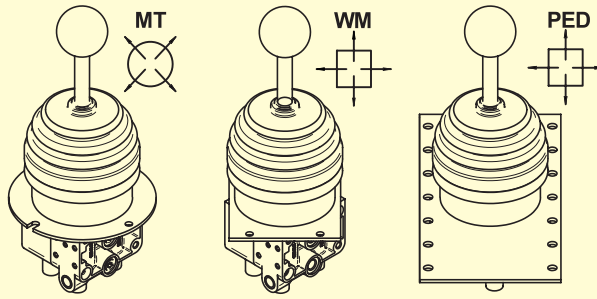
DAV-1274

SPRING RETURN TO NEUTRAL NEUTRAL LOCK, ON-OFF SWITCH		1274-31
SPRING RETURN TO NEUTRAL, NEUTRAL LOCK SINGLE DETENT, ON-OFF SWITCH		1274-32
SPRING RETURN TO NEUTRAL, NEUTRAL LOCK DOUBLE DETENT, ON-OFF SWITCH		1274-33

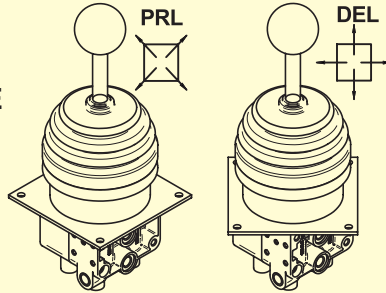
PNEUMATIC FEATHERING JOYSTICKS

NOTE: Simultaneous 360° operation.

NOTE:
All Joystick Valves
available with various
mounting plates.



MT - MUNSON TISON PLATE
WM - WILLIAMS PLATE
PED - PEDESTAL (LARGE) PLATE
PRL - PARALLEL PLATE
DEL - OFFSET PLATE



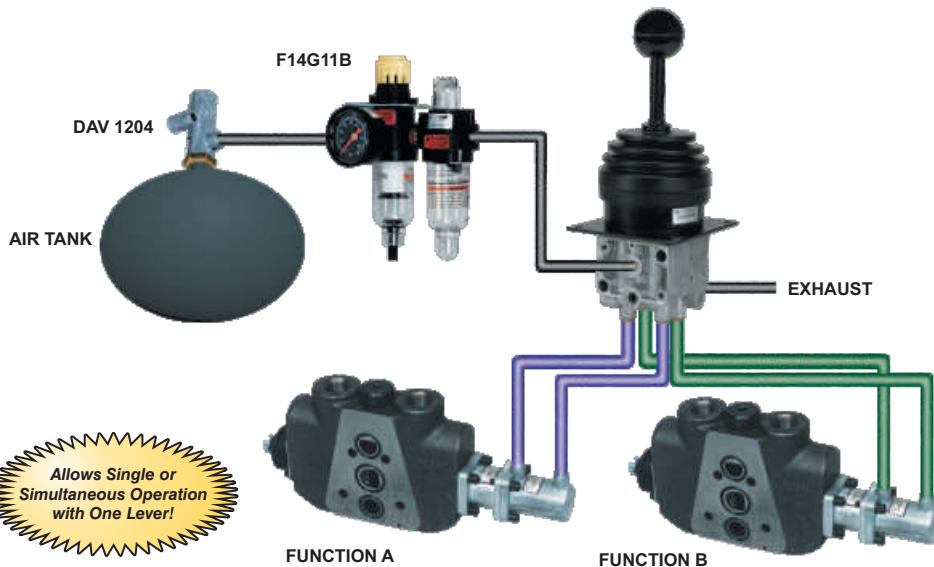
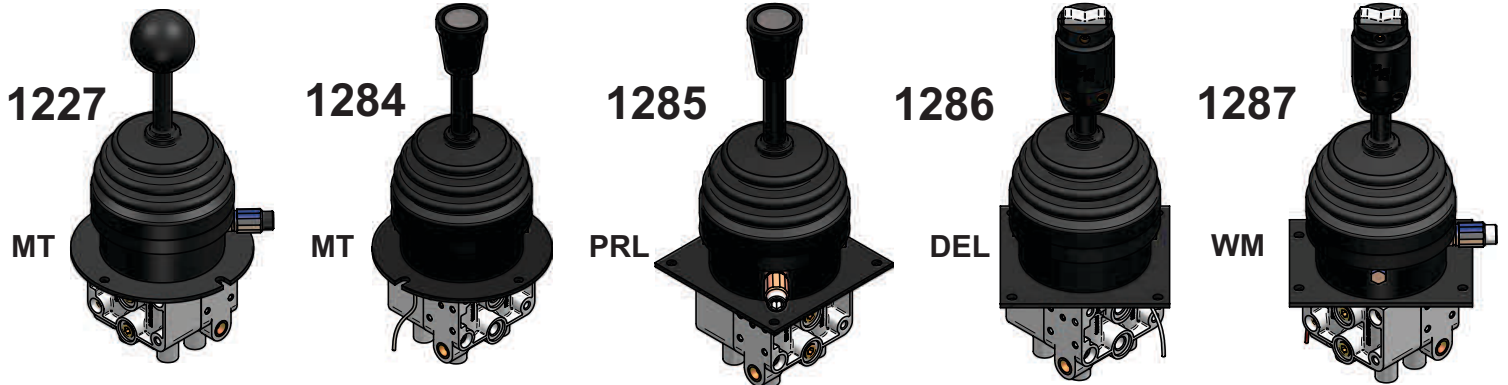
Features a compact assembly of two DAV1221 pneumatic valves allowing single operation of valve function with one lever capable of articulating 360 degrees.

APPLICATIONS: front end loaders, roll offs, municipal snowplow trucks.

Available with various mounting plates for aftermarket and OEM. See illustration at left.

Lit knobs, electric handle grips and detent option for a float function also available.

HEAVY DUTY DESIGN • NON-RATING DESIGN FOR THE ELECTRIC HANDLES & LIT KNOBS



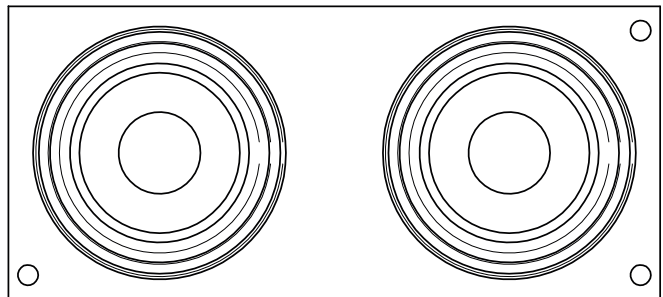
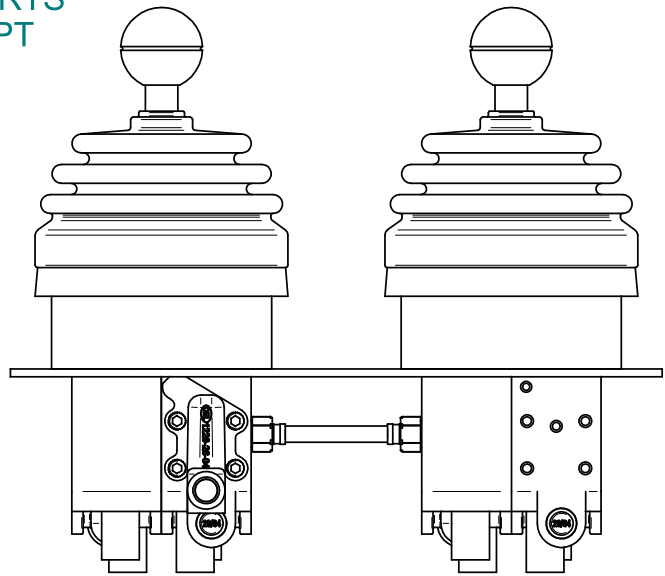
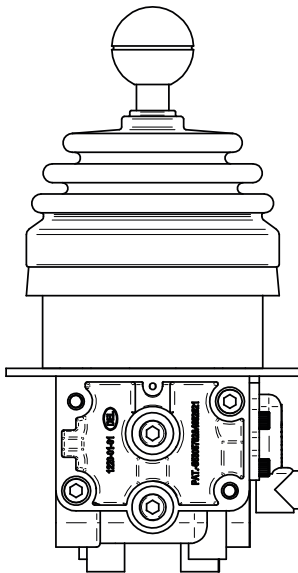
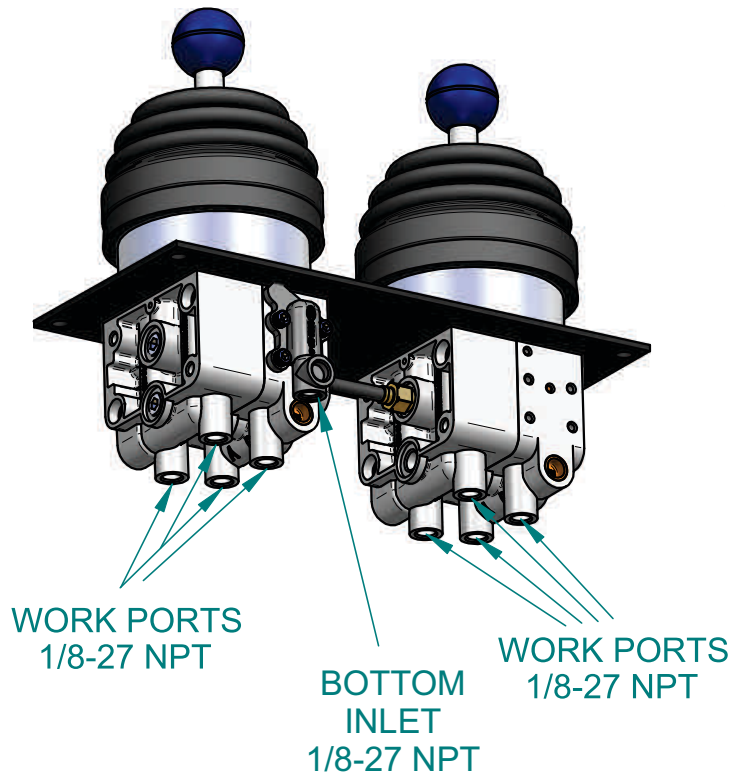
Allows Single or Simultaneous Operation with One Lever!

1286

Ergonomically designed joystick for driver comfort with on/off momentary switches.

RED TRIGGER to guard against accidental button engagement or use for another function





SINCE 1945

ALL INFORMATION IN THIS DRAWING IS COPYRIGHT PROTECTED.

AIR VALVE QUAD ASSEMBLY OF TWO
C/W INLET MANIFOLD - DIMENSIONS
1226-2A-43



UNITS: INCHES

SCALE: NTS

CHKD:
DRWN: O.S. Dec. 23/04
REVD:

SHEET SIZE: A

REV.

OPTIONS AVAILABLE

**JOYSTICK
VALVE
OPTIONS
CHART**

	ROUND PLATE	WILLIAMS PLATE	PEDESTAL PLATE	PARALLEL PLATE	OFFSEET PLATE	1/8" NPT PORTS	GATED	PIC CARTRIDGES	SHORT RIDGES	BAT-STYLE HANDLE	LOCK-IN-NEUTRAL	SINGLE DETENT	QUAD DETENT	LIGHTED DETENT	PTO CONTROL	DUAL JOYSTICK	5-BUTTON JOYSTICK (ON/OFF/ON) ROCKER SWITCH	INLET MANIFOLD	HD SPRINGS	Notes:	
PART NUMBER								1/8	PI											HD	
1226-01	●							●												●	
1226-02			●					●												●	
1226-03				●				●												●	
1226-04					●			●												●	
1226-05						●		●												●	
1226-11	●							●	●												
1226-12			●					●	●												
1226-13				●				●	●												
1226-2A-43				●				●								●				●	
1226-31	●								●												
1226-32			●						●												
1226-34					●				●												
1226-35						●			●												
1226-43				●				●		●											
1226-44					●			●		●											
1226-51	●							●			●										
1226-61	●							●				●									
1227-11	●							●						●							
1227-13				●				●						●							
1227-15						●		●						●							
1227-42			●					●							●						
1227-55						●		●		●				●							
1266-03				●				●									●				
1266-05						●		●									●				
1285-03				●				●						●		●				●	
1284-02			●					●							●					●	
1284-03				●				●							●					●	
1286-06	●							●												●	
1286-02			●					●												●	
1286-03				●				●												●	
1286-04					●			●												●	
1286-10						●		●												●	
1286-11	●								●											●	
1286-12			●					●		●										●	
1286-14								●		●										●	
1286-45/55	●							●									●			●	55/ RED TRIGGER FUNCTION
1287-03				●				●					●						●	●	

DUMP PUMP ACTUATORS

DEL Hydraulics manufactures direct mount air shift cylinders for various hydraulic dump pumps. They allow proportional control for lowering dump bodies and end dump trailers, etc. that utilize air controls. The benefits include less installation time and low overall maintenance costs.

	APPLICATION	PART NO.
PARKER	C101/102	ASC-3016
	G101/102-DET	ASC-3010-01
	G101/102-NON DET	ASC-3010-02
MUNCIE	E/EH	ASC-3016
PERMCO	DM640	ASC-3016
	DMD25	ASC-3035
	DMR400	ASC-3051

HYDRAULIC VALVE ACTUATORS

The ASC series actuators are designed to control the closing and opening of hydraulic valves by installing a pneumatic shift cylinder to the end of the hydraulic spool. An efficient, cost effective way to control cables and/or electrical systems which results in cost savings on trouble-shooting and service maintenance issues . They provide balanced areas for true proportional control. Simple installation with no exterior moving parts.

- **Die-cast Zinc Alloy material**
- **Non-Binding**
- **Compact Size**
- **Proportional Control**
- **Preassembled for Quick & Simple Installation**
- **No exposed parts with Anti-Bind Technology which allows years of service**

	APPLICATION	PART NO.
PARKER	A20	ASC-A20
	A20-K4 FLOAT	ASC-3009
	A35	ASC-3019
	25P	ASC-3017
	V20	ASC-V20
	V20-K4 FLOAT	ASC-3023
	V40	ASC-3027
	V42	ASC-3015
	V50	ASC-3042
	S75	ASC-3033
	DS75	ASC-3029
	S-100	ASC-3034
	SP3-SP4	ASC-3040
	PARKER/KONTAK	K-18
REXROTH	MP-18	ASC-3018
	MP-4	ASC-3059
CROSS	BA	ASC-3026
	S-100	ASC-3081
HEIL	031-6131-HPT	ASC-3043
PRINCE	20 SERIES	ASC-3013
	5100 MONOBLOCK	ASC-3024
	SS2A10	ASC-3054
	SV	ASC-3055-03
	SVM	ASC-3055-04
	DS41AE	ASC-3056
	DS41AE	ASC-3057

Continued next page

HYDRAULIC VALVE ACTUATORS

continued from page 19

	APPLICATION	PART NO.
FLODRAULICS	HYDROCONTROL	ASC-3039
HUSCO	5000 SERIES	ASC-3038-03
	5000 SERIES - Threadless	ASC-3038-04
	6000 SERIES	ASC-3036
	6000 SERIES - 375	ASC-3037
	VALVOIL	11C200005
SALAMI	VD6A	ASC-3061
	VDM6	ASC-3064
	VD8A	ASC-3062
	VDM8	ASC-3063
	VD10A	ASC-3071
	VD12A	ASC-3072
BLB	40 SERIES	ASC-3077
	70 SERIES	ASC-3076
	150 SERIES	ASC-3075
SAUER DANFOSS	PVG32-EL-SL	ASC-3082-04
	PVG32-MAN	ASC-3083
EATON	CM120	ASC-3084
	CM80	ASC-3085
BRAND	16T3NS	ASC-3080
WILLIAMS	08 SERIES	ASC-3025

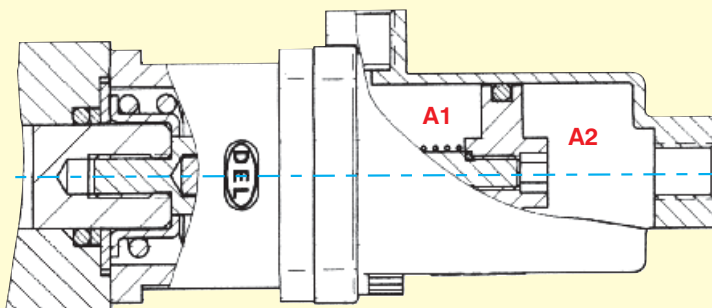


FEATHERING! E-Z Fit Pneumatic Shift Cylinders Hydraulic Valve Applications

PRE-ASSEMBLED!

ULTRA COMPACT!

SIMPLER INSTALLATION!



These Cylinders Fit Various Valves, such as PARKER, GRESEN, COMMERCIAL, REXROTH, CROSS, VALVOIL, PRINCE, SALAMI and more.

*Tighten the assembly
with a hex wrench*

**All Moving Parts
TOTALLY ENCLOSED!**

DON'T GET CAUGHT IN A BIND!

*Only DEL E-Z Fit Pneumatic Shift Cylinders
offer these important safety features.*

**Only DEL Pneumatic Shift Cylinders
have these Important Safety Features!**

Unique Design allows balanced areas **A1** and **A2** for consistent proportional control in both Directions. Self-alignment feature for aligned and misaligned hydraulic spools eliminates binding & jamming.

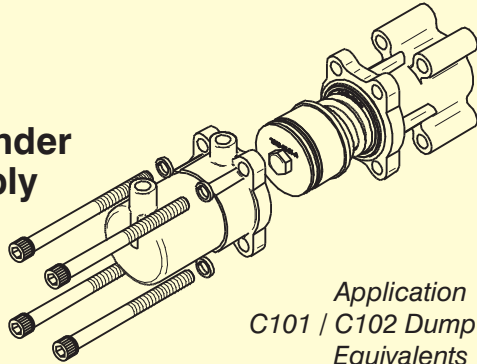




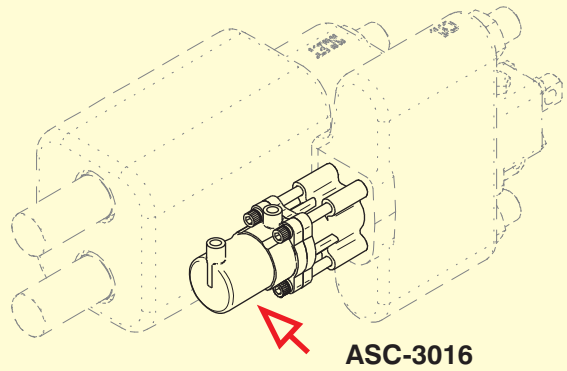
ASC-3016 Air Shift Cylinder

Feathers & Does Not Bind

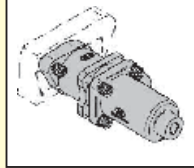
Shift Cylinder Assembly



Application
C101 / C102 Dump Pump
Equivalents

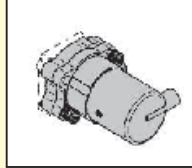


ASC-3010



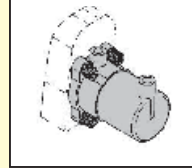
Commercial
G101/ G102
(Clevis Spool End
C/W Detent Cap)

ASC-3051



Permco
DMR400

ASC-3035

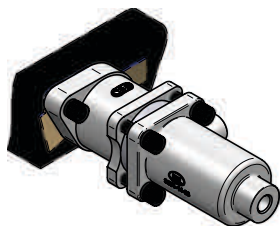
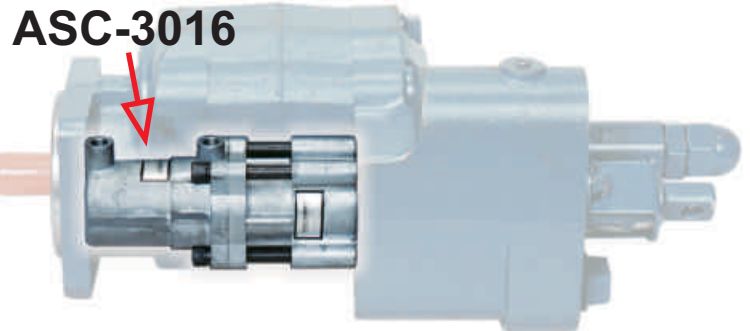


Permco
DMD 25
(Threaded Spool End)

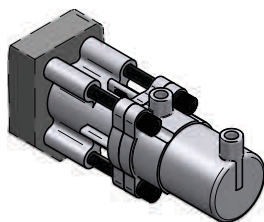
PNEUMATIC CONTROL SHIFTERS for HYDRAULIC PUMPS

ASC-3016 Commercial C101/102
Muncie E2XL
Permco DMD25/DM640
Buyers BPC, Metaris

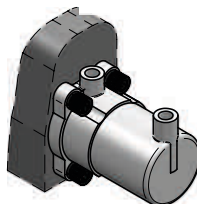
ASC-3010-01/ Commercial G101/102 detent
ASC-3010-02
ASC-3051 Permco DM400, DMR400



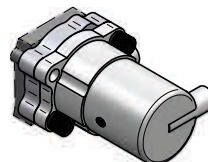
ASC-3010-01
ASC-3010-02



ASC-3016



ASC-3035



ASC-3051

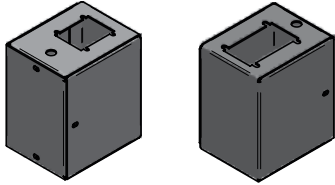
CUSTOM CONTROL CONSOLES

CONTROL CONSOLES ARE POWDER COATED & HAVE A HIGH-QUALITY GLOSS FINISH.
They are attractive and feature a two piece design that are easy to install, saving labor costs

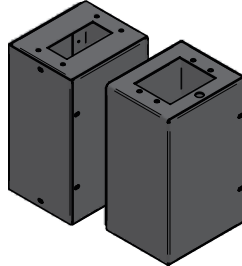
NOTE: Last 2 digits of part number shows the height in inches of each console

Custom Consoles available for your special application.

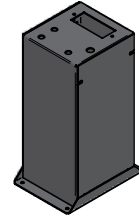
CC-1202-03-05



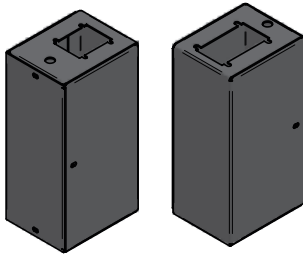
CC1221-2B-10



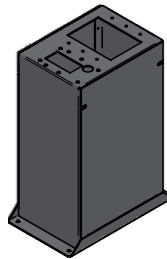
CC-HSA-10



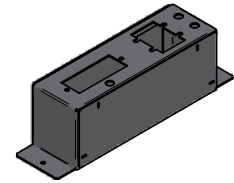
CC1202-03-10



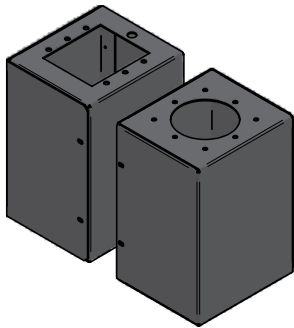
CC-1221-3B-14



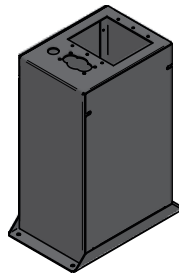
CC-1229-HL-04



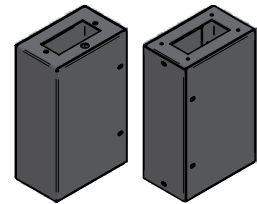
CC-1221-3B-26-10



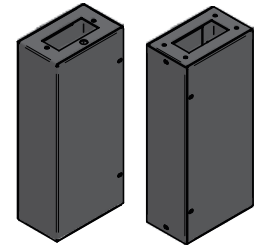
CC-1221-3B-M2-14
MUNCIE VALVE OPENING



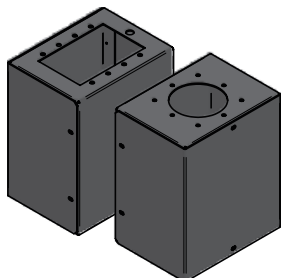
CC-1229-10



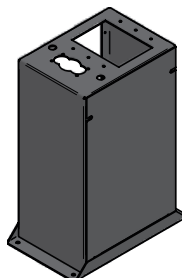
CC-1229-14



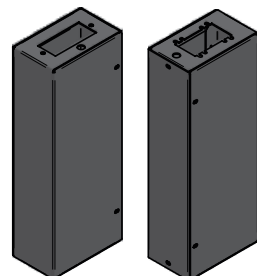
CC-1221-4B-26-10



CC-1221-3B-C2-14
CHELSEA VALVE OPENING

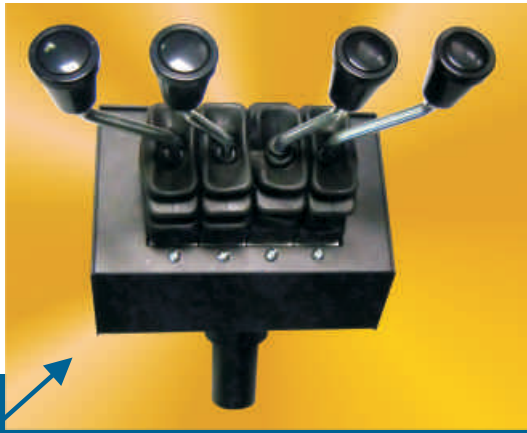


CC-1229-16

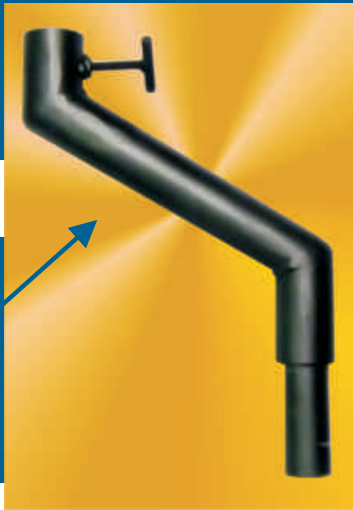


Swivel Pedestals (Ergo HD) - **Innovation - Quality!**
 Once the base is installed to the floor, the middle and top sections can be rotated to either the driver or the passenger side by unlocking the "T" handles then tightening again.
 Available in 2 standard heights, 12" and 16"

- Removable Top & Middle pieces for Easy Access
- Configurable for up to 10+ valves
- Ease of installation saves on overall costs
- Accepts round tubing through the base and middle to the top
- Ease of ordering with new EZ part numbers
- User Friendly
- Powder Coated



TOP SECTION
 shown with
 DEL Pneumatic
 Valves



**WIDER
 MIDDLE
 SECTION TUBE**
 with T-bolt
 Swivel.
 Easily route
 tubing & wires

HEAVY-DUTY BASE
 12" or 16" high tube
 with T-bolt swivel



**Swivel Pedestal
 Available with**

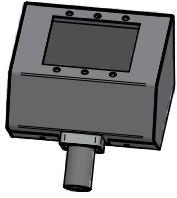
- 3 STACKABLE VALVES
- 4 STACKABLE VALVES
- 5 STACKABLE VALVES
- 6 STACKABLE VALVES
- 7 STACKABLE VALVES
- 8 STACKABLE VALVES
- 9 STACKABLE VALVES
- 11 STACKABLE VALVES

**TOP & MIDDLE
 SECTIONS
 SWIVEL
 INDEPENDENTLY!**

Swivels to either the driver or passenger side of vehicles and can be rigidly secured in its optimal position by tightening the swivel T-bolts.

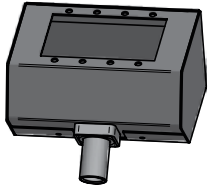


TOP SECTION/TOP VIEW
Fully Customizable:
 We can manufacture different
 lengths, heights and widths
 for many applications.



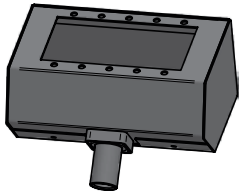
PT3

TOP SECTION - 3 STACKABLE VALVES PT3



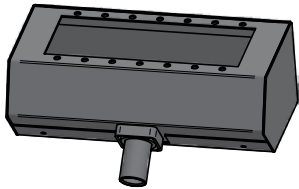
PT4

TOP SECTION - 4 STACKABLE VALVES PT4



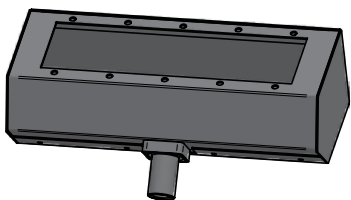
PT5

TOP SECTION - 5 STACKABLE VALVES PT5



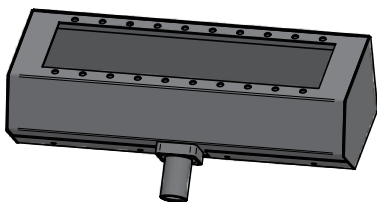
PT6

TOP SECTION - 6 STACKABLE VALVES PT6



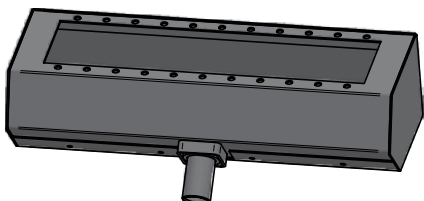
PT7

TOP SECTION - 7 STACKABLE VALVES PT7



PT8

TOP SECTION - 8 STACKABLE VALVES PT8

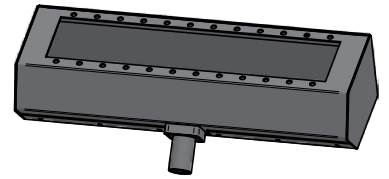


PT9

TOP SECTION - 9 STACKABLE VALVES PT9

PT11

TOP SECTION - 11 STACKABLE VALVES PT11



PB12

BOTTOM SECTION - 12" HT PB-12



PB16

BOTTOM SECTION - 16" HT PB-16



PB16H

BOTTOM SECTION - 16" HT PB-16H



PM

MIDDLE SECTION PM



MISCELLANEOUS



DAK FIELD KIT 5/32"
Push insert fittings

TUBING & FITTINGS

DAK FIELD KIT 5/32"	FK-532
DAK FIELD KIT 1/4"	FK-250
1/4" D.O.T. APPROVED TUBING & FITTING	FK-250-DOT



DAK FIELD KIT 1/4"
Compression style fittings



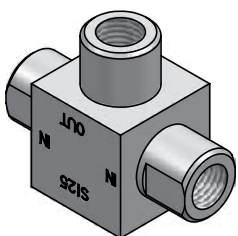
OILER LUBRICATOR & REGULATOR

OILER LUBRICATOR & REGULATOR
F14G



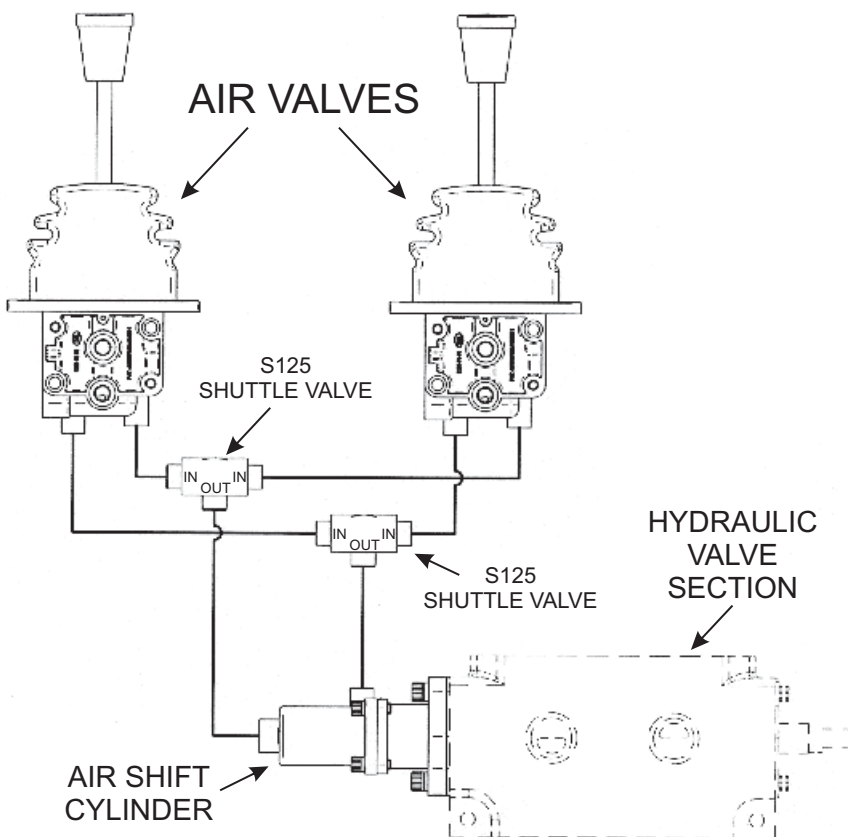
LONG LEAD LIGHT

LONG LEAD LIGHT
DAV-LLI



AIR SHUTTLE VALVE

AIR SHUTTLE VALVE
S125



Eliminate Noise and Dirty Air in Your Cab with the

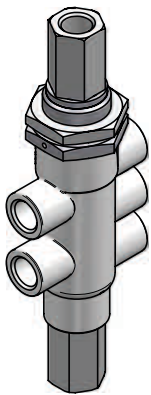
DAV-1245 and DAV-1246 PNEUMATIC CONTROL VALVES

Increase the speed of operation on high volume actuators.

Applications include: Air tarps, tailgate air cylinders and lift axles, as well as other high-volume applications.

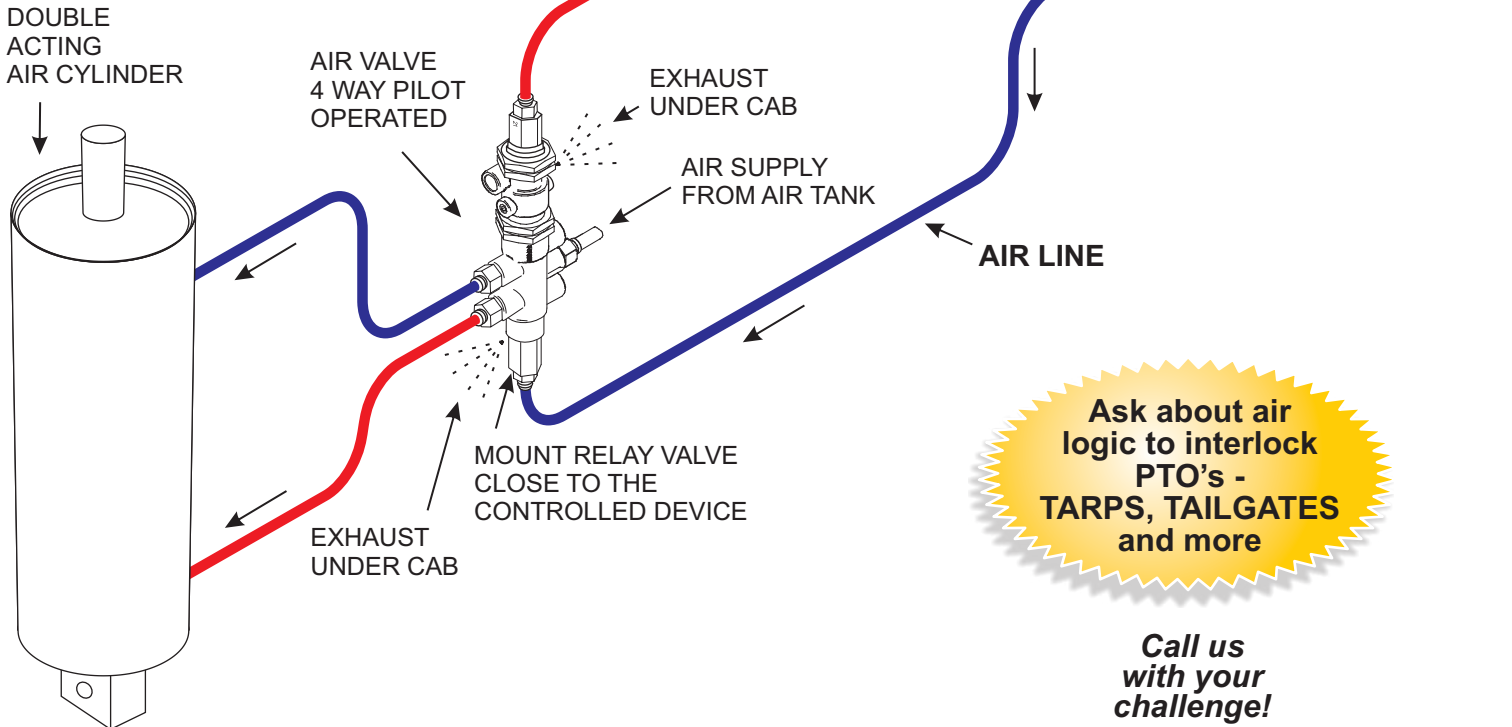


The only thing you hear is air exhausting from the pilot signal.



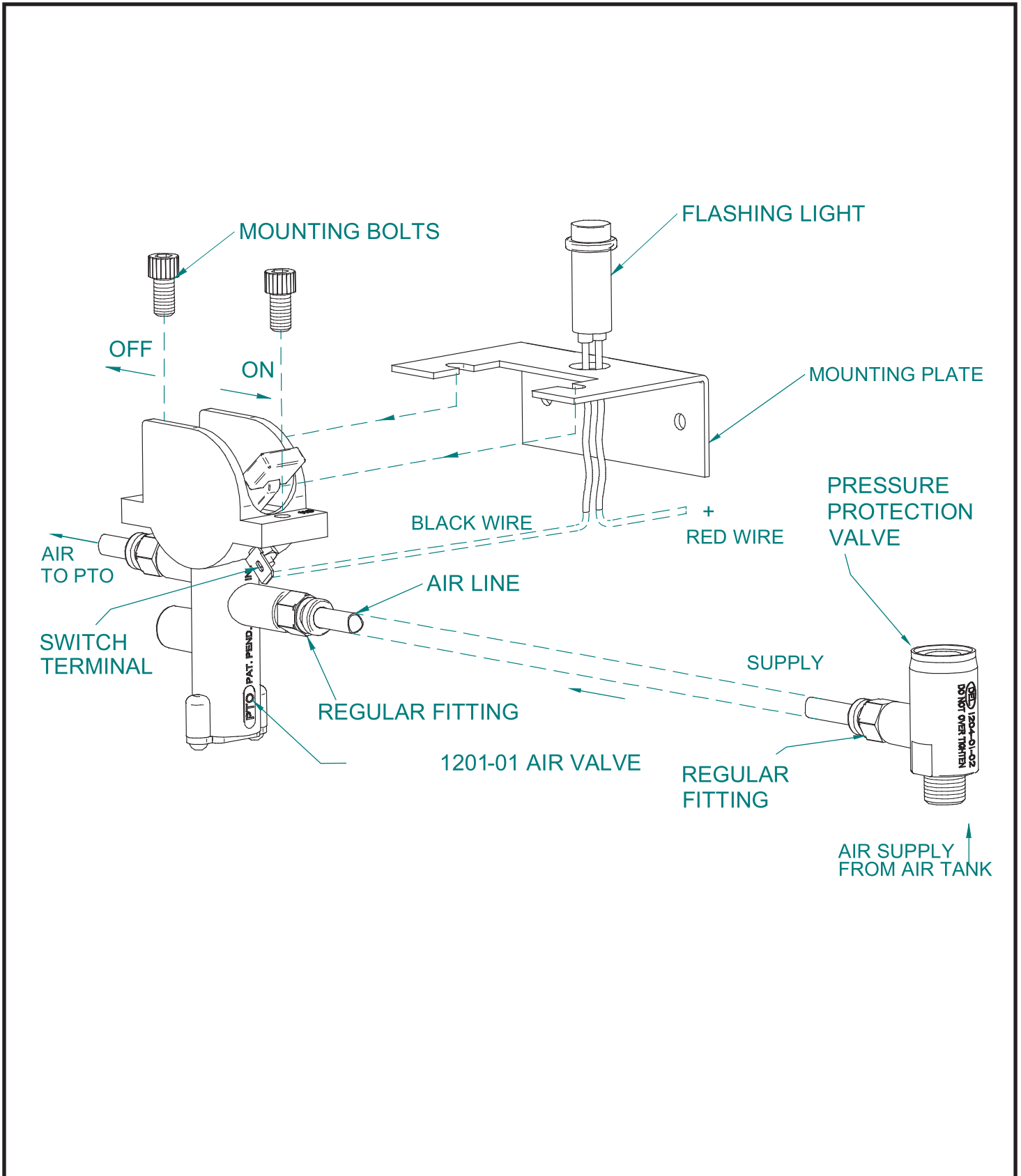
DAV-1245

AIR RELAY VALVE 1245-01
4 WAY, PILOT OPERATED



Ask about air logic to interlock PTO's - TARPS, TAILGATES and more

Call us with your challenge!



DEL PTO AIR CONTROL VALVE KIT
DEL-AK-1201

CHKD:
DRWN: O.S. Jan. 18/05
REVD:

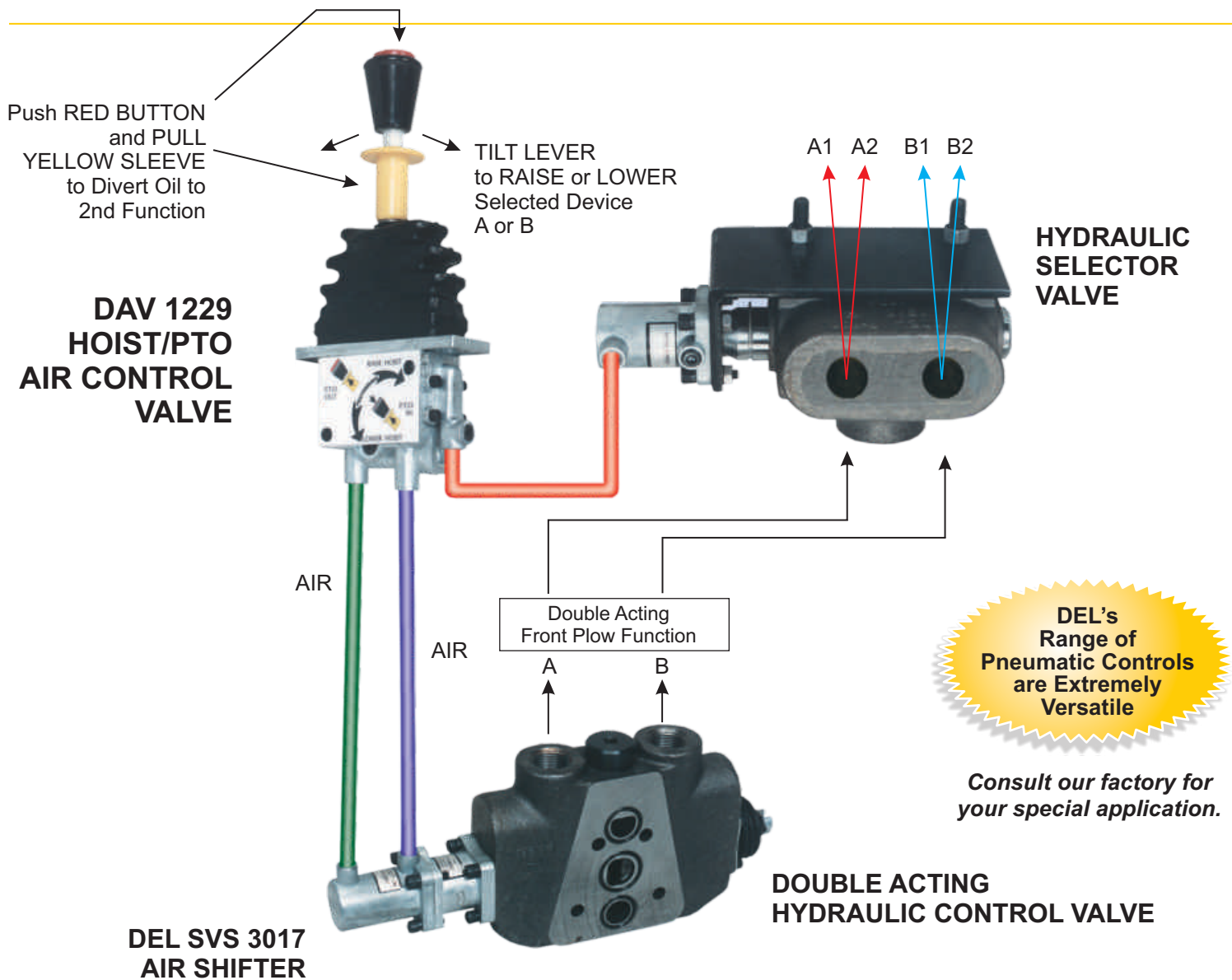
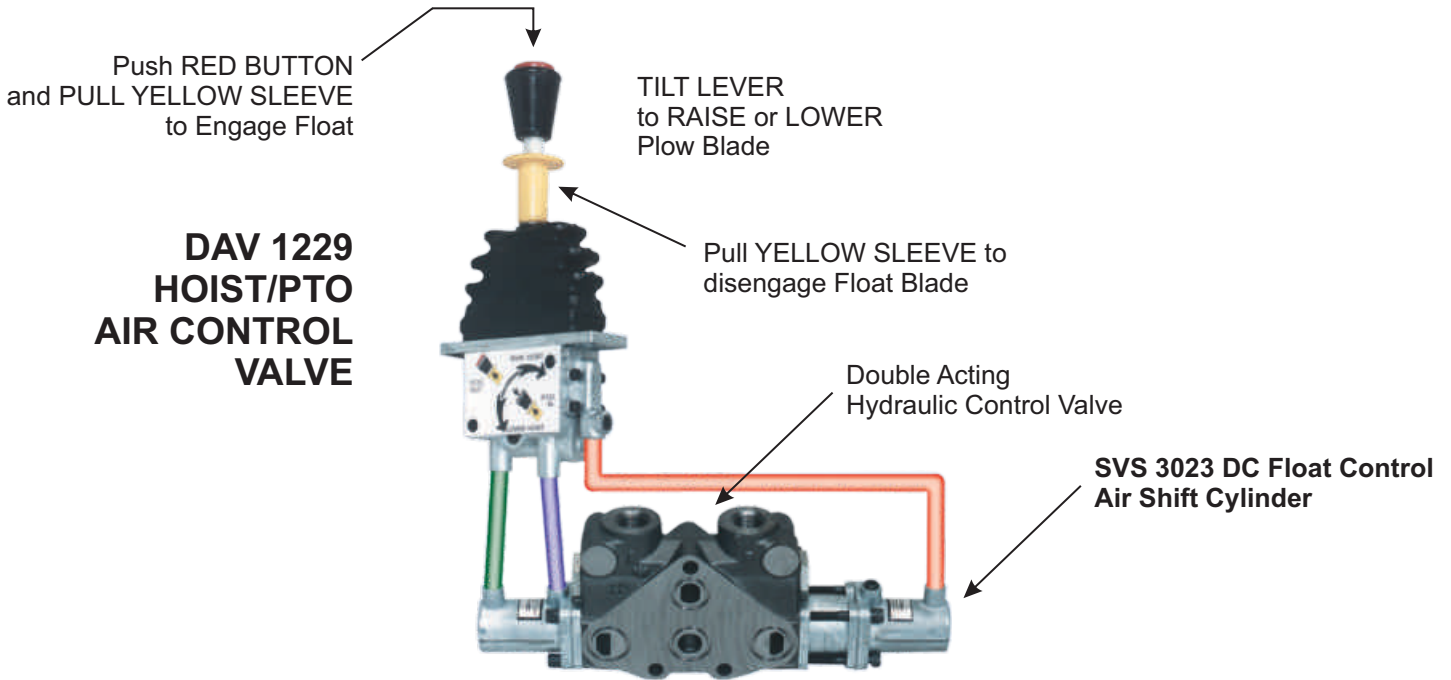


UNITS: INCHES

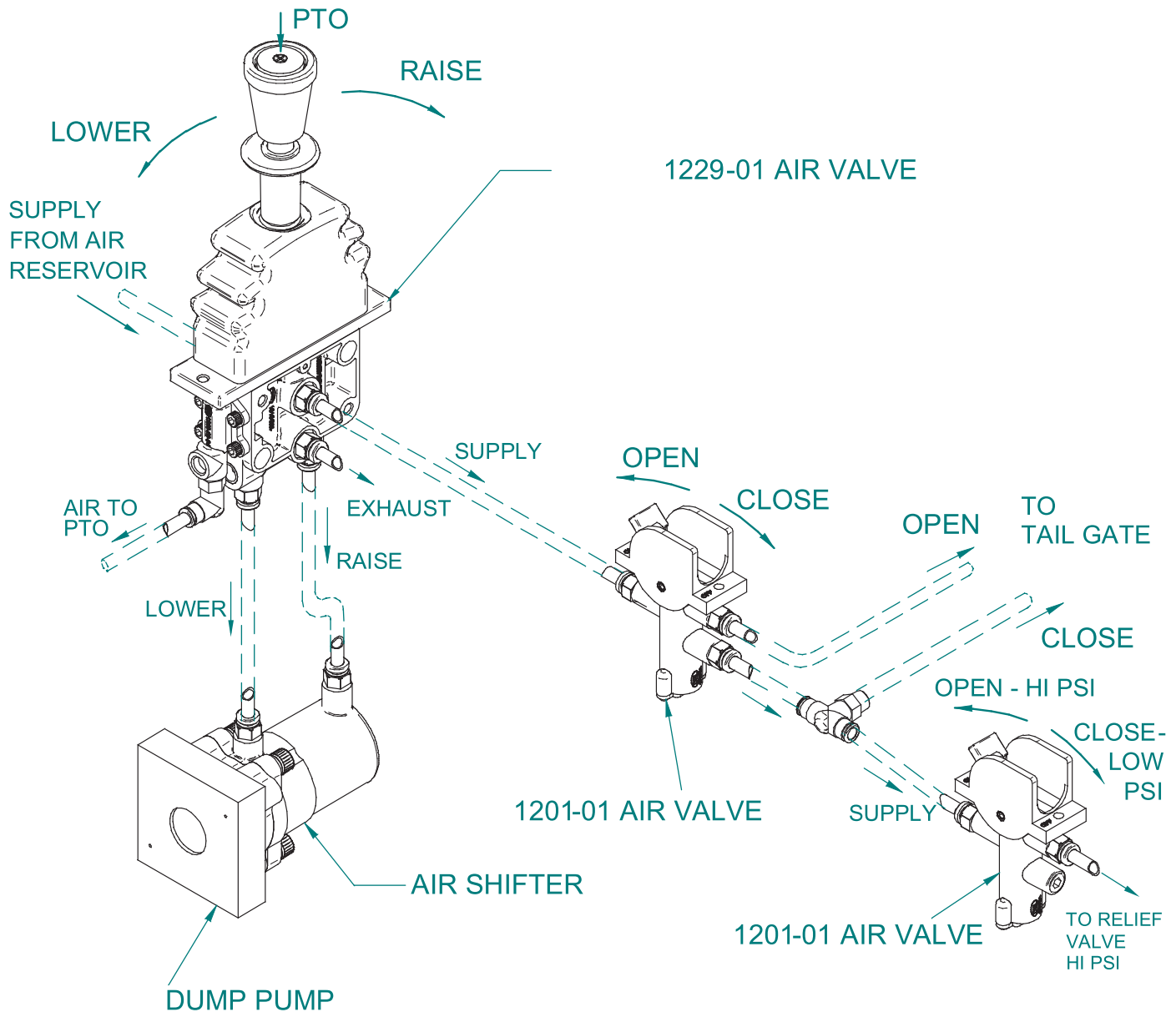
SCALE: NTS

SHEET SIZE: A

REV.



WHEN THE TAIL GATE IS IN CLOSED POSITION, THE RELIEF VALVE CAN BE OPERATED IN HI PRESSURE MODE.
WHEN THE TAIL GATE IS IN OPEN POSITION, YOU CAN NOT OPERATE THE RELIEF VALVE IN HI PRESSURE MODE. THE RELIEF VALVE WILL BE IN LOW PRESSURE MODE.



SINCE 1945

ALL INFORMATION IN THIS DRAWING IS COPYRIGHT PROTECTED.

1229-1208-1201
TO OPERATE DUAL
APPLICATION SYSTEMS



UNITS: INCHES

SCALE: NTS

CHKD:
DRWN: O.S. Mar. 14/06
REVD:

SHEET SIZE: A

REV.

Pneumatic Control Kit for Hydraulic Winch Applications

1221-02 – Move the pneumatic control valve lever forward to apply modulating brake force precisely to the winch drum. (The valve automatically springs back to the neutral position when you release the handle). **OPTION:** Also available with detent (**DT CLIP**) to leave the brake in the Full-On position.

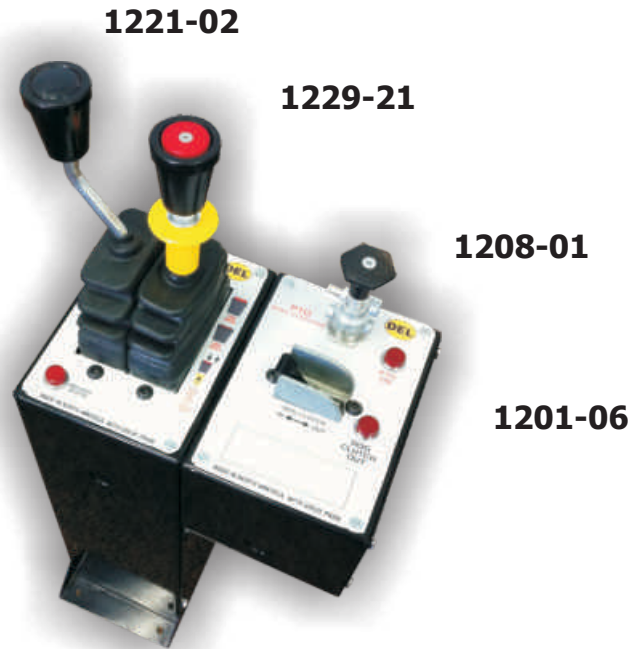
1229-21 – Select winch high speed by lifting and releasing the yellow locking sleeve while holding the red pushbutton down. Select winch low speed by lifting the yellow locking sleeve alone, allowing the red pushbutton to reset to the raised (low speed) position. Control the cable speed proportionally by moving the lever forward or back. This valve also springs back to the neutral position when the handle is released.

1208-01 – Push the side safety pin inwards and depress the black knob to engage the PTO. (The air valve is supplied with a pilot cartridge assembly to automatically disengage the PTO when the spring parking brakes are released).

1201-06 – Move the valve toggle lever to engage or disengage the dog clutch - in or out.

Red Flashing Lights:

- PTO engaged
- High Speed selected



Pneumatic Winch Control Kit includes the air valves, console and tubing, pre-installed with flashing red warning lights.

Pneumatic Combo Kit 1229-HILO

**WALKING FLOOR + END DUMP?
DEL HYDRAULICS MAKES IT
MORE EFFICIENT & SAFE**

**EASY
INSTALLATION**

DEL Air Logic provides control of dual relief valve settings.

**HELPS GUARD AGAINST
ACCIDENTAL OVER PRESSURE!**

- The **DAV 1229 Pneumatic Control valve** engages the PTO and controls the raising and lowering of an end dump trailer.
- The **DAV 1201 Pneumatic Valves** provide control of separate relief valve settings and operates a pneumatic tailgate cylinder.



- **Preassembled**
- **Compact Design**
- **Black Slim Style Console**

Feathering Controls

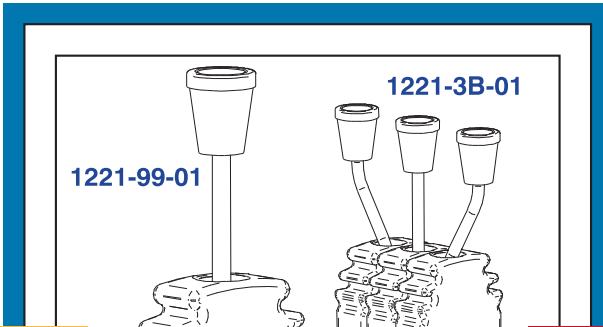
FEATHERING CONTROLS FOR REFUSE VEHICLES



1221-2B-41

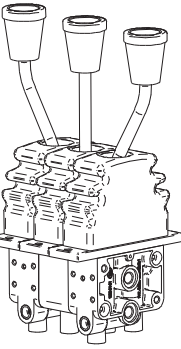


1221-3B-41



1221-99-01

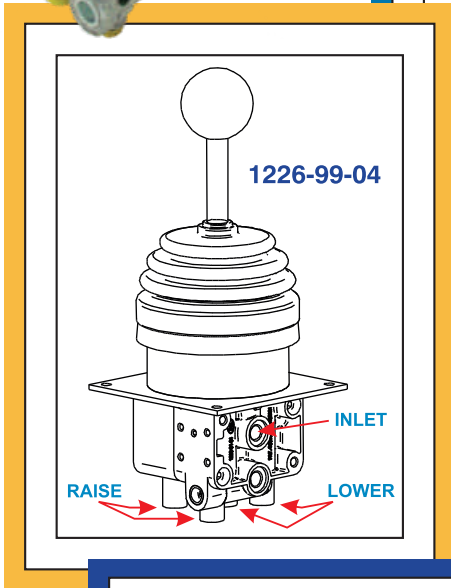
1221-3B-01



INLET

LOWER

RAISE

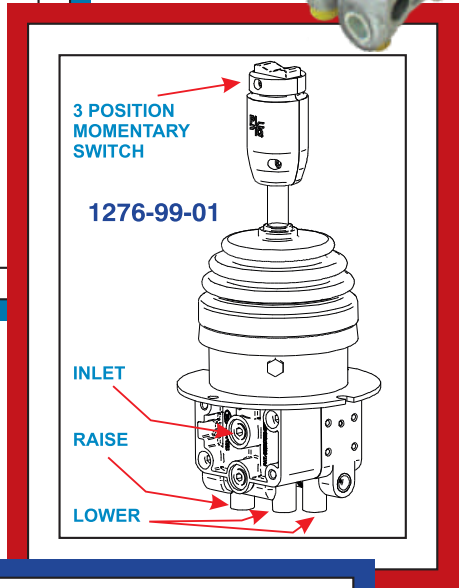


1226-99-04

INLET

RAISE

LOWER



3 POSITION
MOMENTARY
SWITCH

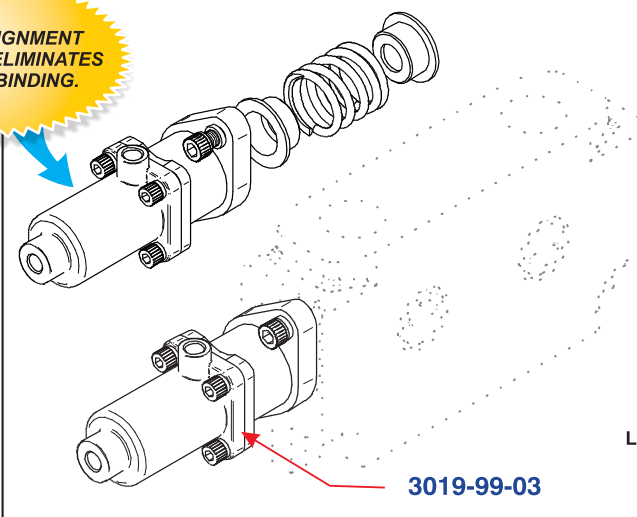
1276-99-01

INLET

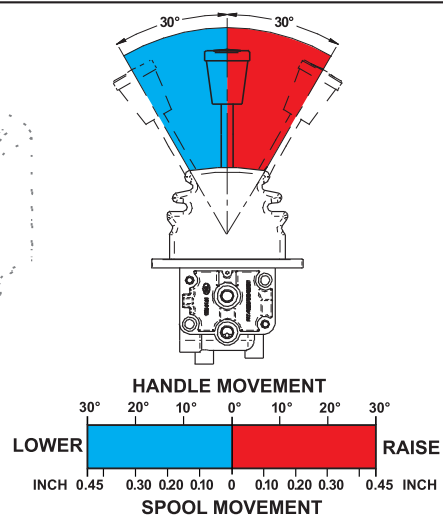
RAISE

LOWER

SELF ALIGNMENT
FEATURE ELIMINATES
SPOOL BINDING.



3019-99-03

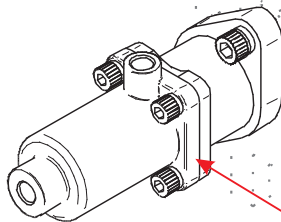
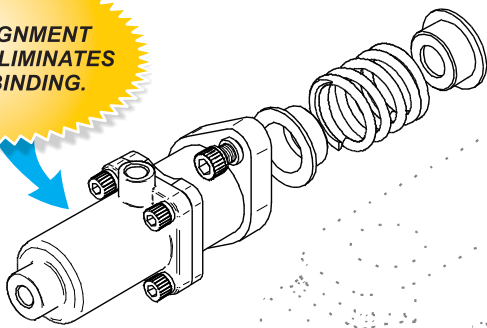


Feathering Controls

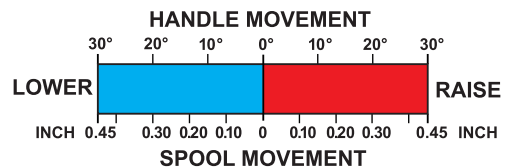
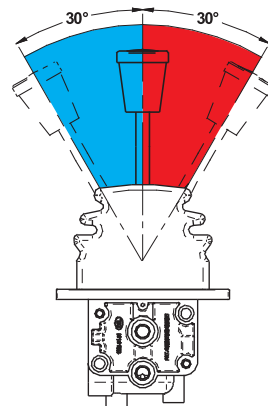


FEATHERING CONTROLS FOR MUNICIPAL SNOWPLOW VEHICLES

SELF ALIGNMENT
FEATURE ELIMINATES
SPOOL BINDING.



3019-99-03

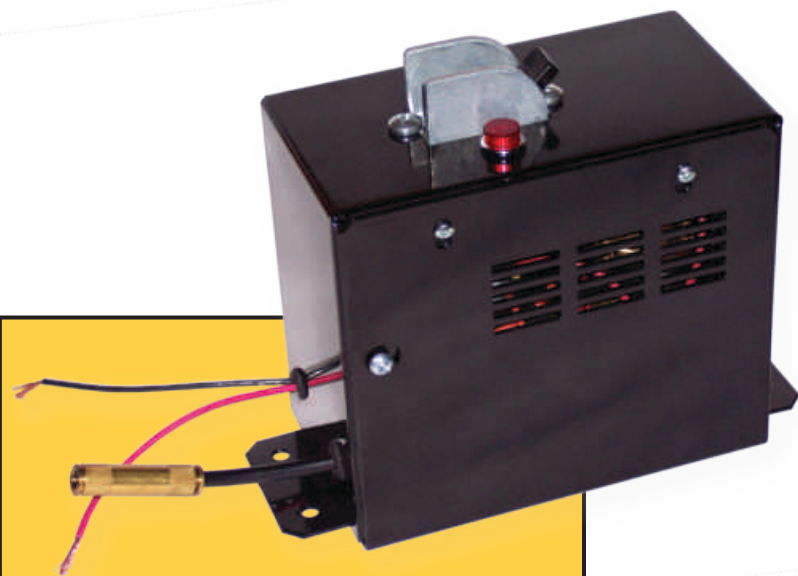


Solutions for Trucks without Air Brakes

DEL has the **SOLUTION** for trucks without air brakes to engage and disengage power take offs

Eliminate problems with control cable routing.

Eliminate problems with PTO electric solenoids.

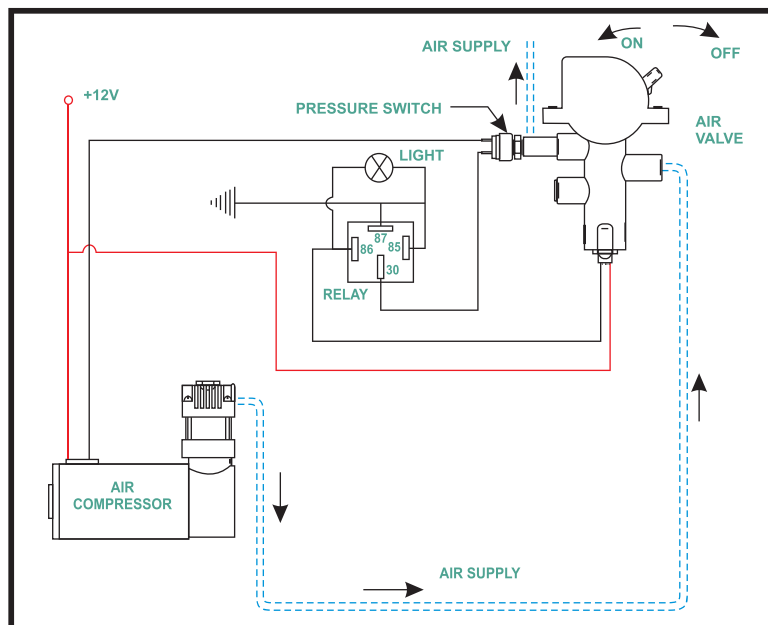


**EASY
INSTALLATION**

Pre Wired

- PTO AIR VALVE
- CUSTOM CONSOLE
- AIR COMPRESSOR
- PRESSURE SWITCH
- ELECTRIC RELAY
- TUBING AND FITTINGS
- BLINKING WARNING LIGHT
- IN LINE FUSE

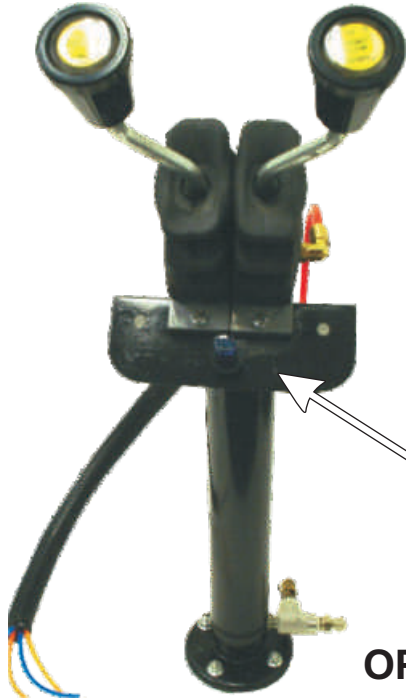
PART NUMBER D43-ACK1201



Hydraulic/Pneumatic Air Compressor Kit



The **DEL** Hydraulics Air Compressor Kit allows you to operate precision air-over-hydraulic systems on vehicles that do not have air brakes. **Ideal for one-ton snowplow, rolloff and dump-body equipped vehicles.** This system includes a heavy-duty air compressor, a unique reservoir/pedestal assembly and wiring harness. A wide variety of control and air shift options are available to customize your system to meet your exact needs.

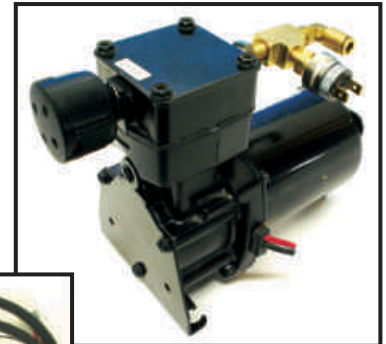


D43-ACK 1221 X2 KIT

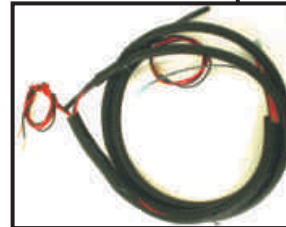
Pneumatic *Feathering* Controls

Integrated Air Reservoir/Pedestal Assembly with Manual Relief Valve and 2 Position On/Off Compressor Switch *Shown with 2-Valve Bank kit option.*

Heavy Duty 12 Volt DC Air Compressor with Pressure Switch



Wiring Harness



OPTIONAL AIR CONTROL VALVE KITS

D43-ACK 1220 KIT



Three Valve Bank with One Lock-in-neutral Valve on Right Side

D43-ACK 1276 KIT



Joystick Control with PQ Switch in Handle

D43-ACK 1221 X3 KIT



Three Valve Bank: All three position Spring Centering

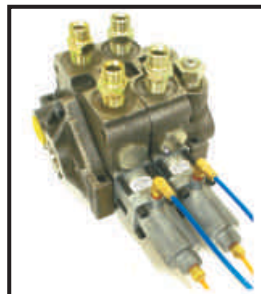
D43-ACK 1225 KIT



Three Valve Bank with One Lock-in-neutral Valve in Center

Add DEL Air Shift Cylinders to the Assembly by Adding Suffix Numbers **-12** or **-13** to the end of the part number.

- 12 = D16-3012-99-03 for Parker A20 Valves
- 13 = D16-3013-99-03 for Parker V20 Valves



Optional Air Shift Cylinders Shown on Hydraulic Valve

Specify the Air Cylinders (see pages 19 & 20)



**DEL PRODUCTS ARE
MANUFACTURED IN
NORTH AMERICA
WITH PRIDE**



HYDRAULICS



BUILDING *for the* FUTURE

571 HOWARD STREET • BUFFALO, NY 14206

TEL 716.853.7996 • FAX 716.853.8003

www.DEL.US.com

